

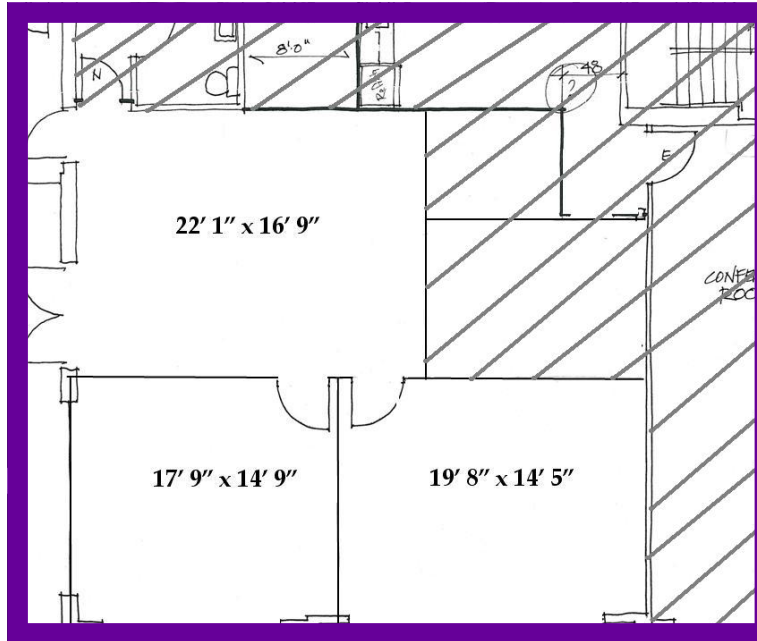


## Office Space Available

### Lots of Great Features!

- Available now.
- Large, open, light-filled space.
- Vibrant area of the Central District.
- Parking lot available.
- Street visibility.
- Depending on your needs, this location can serve as a primary or secondary office.
- Easy freeway access to I-90 & I-5 and a Bus Stop at front door (48).
- Wired for security system.
- 927 sq ft at \$19/sq ft plus CAM
- Wheelchair accessible facilities.
- Fun neighbors! Check us out at [www.schoolsoutwashington.org](http://www.schoolsoutwashington.org)!

Contact Janet or Mari at  
School's Out Washington at  
[info@schoolsoutwashington.org](mailto:info@schoolsoutwashington.org) or call  
(206)336-6926  
for more information!



927ft<sup>2</sup>

